

Bock HGX22e/160-4 S Compressor package

Specifications

Brand	Bock
Type	HGX22e/160-4 S Compressor package
Refrigerant	Freon
kW at 0°C/+40°C	11,20
kW at -5°C/+40°C	9,17
kW at -10°C/+40°C	7,54
kW at -20°C/+40°C	4,81
kW at -30°C/+40°C	2,75
kW at -40°C/+40°C	1,33
On steel base frame	✓
Pressure safety switches	✓
Hp/Lp/Op	
Liquid receiver	✓
Liquid receiver ltr.	19
Oil separator	✓
Liquid line filter drier	✓
Sight Glass	✓
Control panel	✓
m3 / h	13
Package / Rack	✓
Sizes	900x670x1400 mm
Stock	1



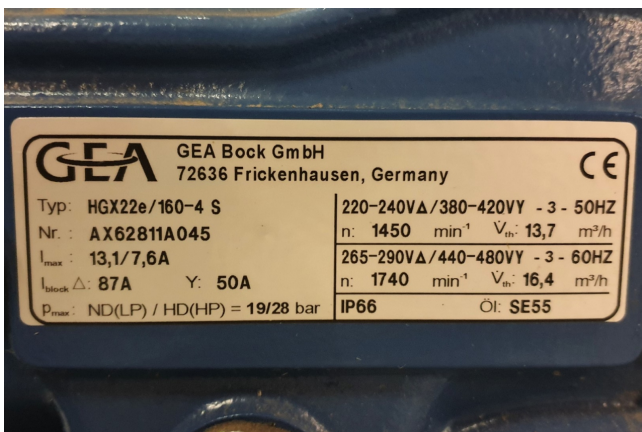
Description

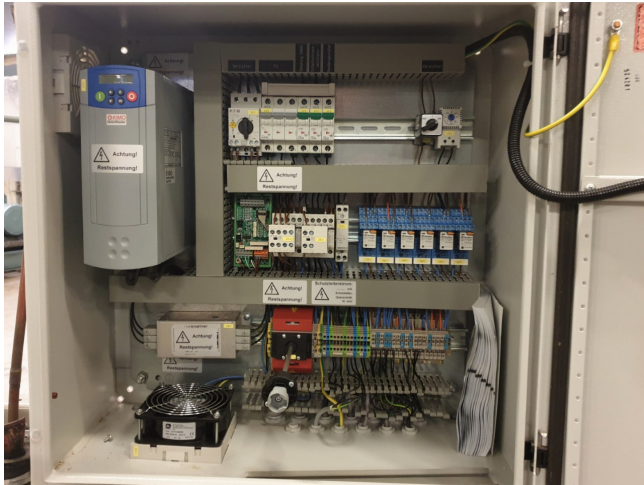
Used Bock HGX22e/160-4 S Compressor package

Used Bock HGX22e/160-4 S compressor unit. Complete with liquid receiver, oil separator, control panel, pressure safety switches and liquid line filter.

*Why choose for HOSBV? Were not only the largest used refrigeration specialist in Europe, but also, we deliver all equipment including an extensive test, warranty and industrial cleaning.

*Optional we can also arrange the logistics.





R404A/R507		Performance data												50 Hz
Type	Cond. temp. °C	Cooling capacity \dot{Q}_0 [W]												Power consumption P_e [kW]
		Evaporating temperature °C												
		7.5	5	0	-5	-10	-15	-20	-25	-30	-35	-40	-45	
HGX12P/60-4 S ¹⁾	30 Q	6535	5989	4990	4108	3336	2667	2094	1610	1207	878	616	414	
	30 P	1,20	1,22	1,23	1,20	1,15	1,08	1,00	0,91	0,81	0,71	0,62	0,53	
	40 Q	5537	5060	4191	3428	2764	2193	1706	1297	959	684	465	296	
	40 P	1,49	1,48	1,43	1,37	1,28	1,18	1,06	0,95	0,83	0,71	0,61	0,52	
	50 Q	4535	4128	3390	2748	2195	1723	1324	993	722	503	329		
	50 P	1,72	1,69	1,60	1,49	1,37	1,24	1,10	0,96	0,83	0,70	0,59		
HAX12P/60-4	30 Q							2327	1851	1442	1097	809	573	
	30 P							1,04	0,95	0,86	0,75	0,66	0,56	
	40 Q							1956	1538	1182	883	635	435	
	40 P							1,12	1,00	0,88	0,76	0,65	0,54	
	50 Q							1582	1223	921	670	465	301	
	50 P							1,18	1,04	0,89	0,75	0,62	0,51	
HGX12P/75-4 S ¹⁾	30 Q	8160	7498	6284	5227	4288	3469	2764	2164	1661	1246	911	648	
	30 P	1,52	1,54	1,55	1,50	1,45	1,37	1,26	1,15	1,03	0,91	0,79	0,68	
	40 Q	6934	6357	5304	4419	3606	2902	2299	1789	1364	1015	744	513	
	40 P	1,91	1,89	1,83	1,73	1,63	1,50	1,37	1,23	1,08	0,94	0,81	0,69	
	50 Q	5729	5238	4345	3632	2945	2355	1855	1435	1087	804	577		
	50 P	2,21	2,17	2,05	1,92	1,78	1,62	1,45	1,29	1,12	0,96	0,82		
HAX12P/75-4	30 Q							2888	2296	1789	1361	1004	711	
	30 P							1,29	1,16	1,06	0,94	0,81	0,70	
	40 Q							2427	1908	1466	1095	788	540	
	40 P							1,39	1,25	1,10	0,95	0,80	0,67	
	50 Q							1962	1517	1143	831	577	394	
	50 P							1,46	1,29	1,11	0,93	0,77	0,63	
HGX12P/90-4 S ¹⁾	30 Q	9738	8948	7500	6085	5000	4052	3231	2529	1937	1446	1047	730	
	30 P	1,85	1,86	1,86	1,78	1,69	1,58	1,46	1,32	1,18	1,03	0,89	0,75	
	40 Q	8288	7600	6344	5145	4202	3381	2676	2075	1571	1155	817	549	
	40 P	2,27	2,25	2,17	2,02	1,88	1,72	1,56	1,39	1,21	1,04	0,88	0,72	
	50 Q	6863	6276	5212	4219	3418	2727	2137	1640	1226	886	611		
	50 P	2,66	2,60	2,46	2,25	2,06	1,85	1,65	1,44	1,24	1,04	0,86		
HAX12P/90-4	30 Q							3407	2698	2089	1574	1146	796	
	30 P							1,56	1,43	1,29	1,15	1,00	0,86	
	40 Q							2853	2229	1699	1254	889	596	
	40 P							1,67	1,50	1,33	1,15	0,98	0,82	
	50 Q							2287	1752	1303	932	633	399	
	50 P							1,75	1,54	1,33	1,13	0,93	0,76	
HGX12P/110-4 S ¹⁾	30 Q	11247	10345	8691	7218	5966	4868	3914	3094	2397	1814	1334	946	
	30 P	2,17	2,18	2,16	2,15	2,05	1,92	1,76	1,59	1,41	1,23	1,05	0,88	
	40 Q	9581	8796	7361	6125	5039	4091	3270	2567	1972	1473	1062	728	
	40 P	2,65	2,62	2,53	2,47	2,30	2,10	1,89	1,68	1,46	1,25	1,05	0,88	
	50 Q	7877	7211	6000	5010	4095	3301	2619	2039	1549	1141	803		
	50 P	3,12	3,05	2,89	2,74	2,50	2,25	1,99	1,73	1,49	1,26	1,05		
HAX12P/110-4	30 Q							4092	3265	2558	1960	1461	1051	
	30 P							1,78	1,63	1,46	1,28	1,11	0,94	
	40 Q							3451	2726	2109	1590	1159	806	
	40 P							1,94	1,74	1,52	1,30	1,10	0,92	
	50 Q							2809	2189	1664	1227	866	572	
	50 P							2,05	1,80	1,55	1,30	1,07	0,88	
HGX22e/125-4	30 Q	13400	12400	10500	8790	7250	5870	4650	3590	2680	1920	1320	857	
	30 P	2,19	2,23	2,26	2,24	2,16	2,03	1,88	1,69	1,49	1,28	1,07	0,878	
	40 Q	11660	10700	8970	7460	6090	4880	3820	2900	2120	1490	992	640	
	40 P	2,77	2,75	2,68	2,58	2,41	2,22	2,00	1,76	1,52	1,28	1,06	0,853	
	50 Q	9650	8860	7390	6080	4910	3880	2990	2230	1610	1110	749		
	50 P	3,26	3,19	3,03	2,84	2,60	2,34	2,07	1,80	1,53	1,27	1,03		
HAX22P/125-4	30 Q							4728	3791	2981	2291	1715	1247	
	30 P							1,92	1,71	1,51	1,32	1,13	0,94	
	40 Q							3959	3158	2466	1876	1382	977	
	40 P							2,09	1,84	1,60	1,37	1,14	0,92	
	50 Q							3211	2538	1956	1458	1037	689	
	50 P							2,22	1,92	1,64	1,37	1,10	0,83	
HGX22e/160-4	30 Q	16900	15600	13200	10900	8980	7320	5850	4560	3450	2510	1750	1170	
	30 P	2,71	2,75	2,78	2,73	2,62	2,47	2,29	2,07	1,84	1,59	1,34	1,08	
	40 Q	14500	13400	11200	9170	7540	6090	4810	3700	2750	1960	1330	851	
	40 P	3,43	3,40	3,30	3,19	2,96	2,72	2,43	2,19	1,91	1,62	1,34	1,09	
	50 Q	12100	11100	9150	7480	6090	4860	3790	2860	2090	1460	971		
	50 P	4,02	3,94	3,79	3,51	3,22	2,90	2,58	2,25	1,92	1,60	1,30		